

SCHOOL

STREET

is coming
to our school!



but, what is it?

It's a council-backed scheme that will:

- restrict car access to the school gate**
- but allow people walking and non motorised vehicles**



why?

Because it will be safer for me and my friends to walk to the school gate

Because cars create pollution and traffic jams

Because active travel to school is good for me.



how will it work?

Access will be restricted at drop off and pick up time, term time only

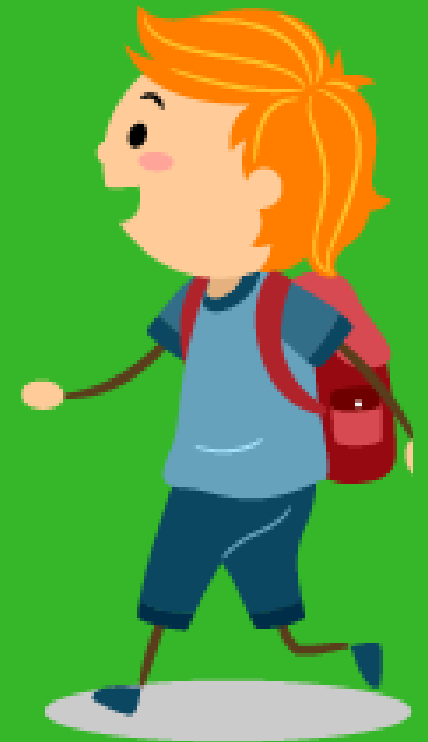
Restriction will be enforced by a bollard or a camera



can I help?

**YES! Support the
consultation when it comes**

**You and I have the right to
clean air and safe journey to
school**



Thank You!



in the meantime...

please, be mindful where you park:

- **pavement: forces people onto the road**
- **dropped kerb: blocks access to people with mobility issues**



in the meantime...

please, be mindful where you park:

- **double yellow lines:**
restricts visibility for
safe crossing

